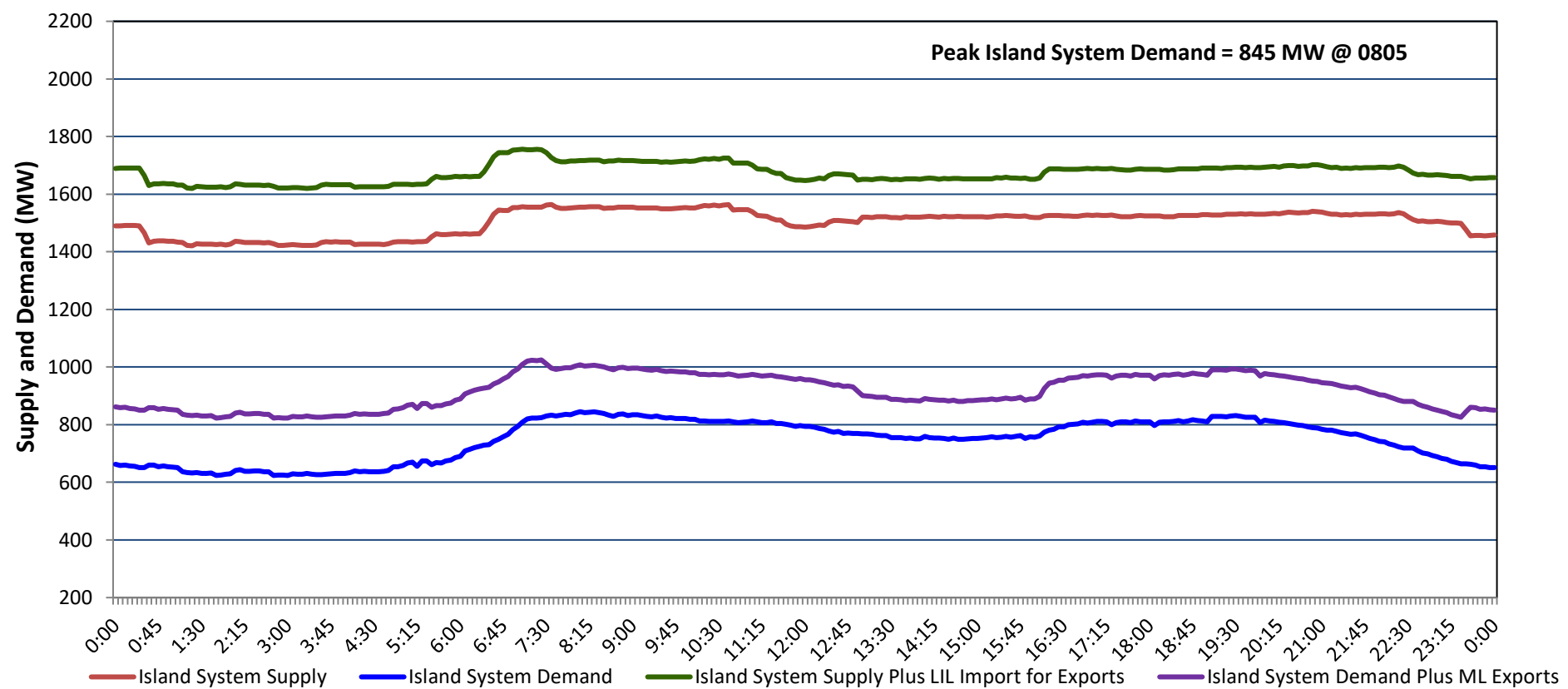


Newfoundland Labrador Hydro (NLH) Supply and Demand Status Report Filed Thursday, October 10, 2024

Section 1 Island Interconnected System - Supply, Demand & Exports Actual 24 Hour System Performance For Wednesday, October 09, 2024



Island Supply Notes For October 09, 2024 ¹

- A As of 1011 hours, April 12, 2024, Holyrood Unit 1 unavailable due to planned outage (170 MW).
- B As of 0800 hours, August 04, 2024, Holyrood Unit 2 unavailable due to planned outage (170 MW).
- C As of 0810 hours, October 06, 2024, Bay d'Espoir Unit 1 unavailable due to planned outage (76.5 MW).
- D As of 0810 hours, October 06, 2024, Bay d'Espoir Unit 2 unavailable due to planned outage (76.5 MW).
- E As of 0946 hours, October 06, 2024, Upper Salmon Unit unavailable due to planned outage (84 MW).
- F As of 2014 hours, October 07, 2024, Labrador Island Link available at 450 MW due to forced derating (700 MW) - Bipole.

Section 2 Island Interconnected System - Supply, Demand & Outlook

Thu, Oct 10, 2024	Island System Outlook ²	Seven-Day Forecast	Island System Daily Peak Demand (MW)	
			Forecast ⁸	Adjusted ⁶
Island System Supply: ⁴	1,380 MW	Thursday, October 10, 2024	850	800
NLH Island Generation: ^{3,7}	1,115 MW	Friday, October 11, 2024	835	785
NLH Island Power Purchases: ⁵	80 MW	Saturday, October 12, 2024	870	820
NP and CBPP Owned Generation:	185 MW	Sunday, October 13, 2024	890	840
LIL/ML Net Imports to Island: ⁹	- MW	Monday, October 14, 2024	905	855
		Tuesday, October 15, 2024	915	865
7-Day Island Peak Demand Forecast:	935 MW	Wednesday, October 16, 2024	935	885

Island Supply Notes For October 10, 2024

G At 0648 hours, October 10, 2024, Labrador Island Link unavailable due to planned outage (700 MW).

- Notes:
1. Generation outages for running and corrective maintenance are included. These are not unusual for power system operations. They generally do not impact customer supply. Hydro schedules outages to system equipment whenever possible to coincide with periods when customer demands are low and sufficient supply reserves are available. However, from time to time equipment outages are necessary and reserves may be impacted.
 2. As of 0800 Hours.
 3. Gross continuous unit output.
 4. Gross output from all Island sources (including Note 4).
 5. NLH Island Power Purchases include: ML Imports, Exploits Generation, Rattle Brook, Star Lake, Wind Generation and capacity assistance (when applicable).
 6. Adjusted for interruptible load and the impact of voltage reduction when applicable.
 7. Due to limitations inherent in the design of combustion turbines, the output of combustion turbines may be reduced in the event that ambient temperatures exceed the threshold required for full rated output. This threshold is dependent on the design of each turbine.
 8. Does not include ML Exports.
 9. LIL Import sunk in the Island System. Actual LIL flows will be restricted by various system conditions including, but not limited to, Island Load, ML Exports and Avalon Unit status.

Section 3 Island Peak Demand and Exports Information Previous Day Actual Peak and Current Day Forecast Peak

Wed, Oct 09, 2024	Island Peak Demand ¹⁰	8:05	845 MW
	Exports at Peak		162 MW
	LIL Net Imports to Island		3,397 MWh
Thu, Oct 10, 2024	Forecast Island Peak Demand		850 MW

Notes: 10. Island Demand is supplied by NLH generation and purchases, LIL Imports plus generation owned and operated by Newfoundland Power and Corner Brook Pulp & Paper (Deer Lake Power, DLP).